



BUILDING CODE COMPLIANCE OFFICE (BCCO)  
PRODUCT CONTROL DIVISION

MIAMI-DADE COUNTY, FLORIDA  
METRO-DADE FLAGLER BUILDING  
140 WEST FLAGLER STREET, SUITE 1603  
MIAMI, FLORIDA 33130-1563  
(305) 375-2901 FAX (305) 372-6339

**NOTICE OF ACCEPTANCE (NOA)**

[www.miamidade.gov/buildingcode](http://www.miamidade.gov/buildingcode)

**West Tampa Glass Company**  
2705 North 35<sup>th</sup> Street  
Tampa, FL 33605

**SCOPE:**

This NOA is being issued under the applicable rules and regulations governing the use of construction materials. The documentation submitted has been reviewed by Miami-Dade County Product Control Division and accepted by the Board of Rules and Appeals (BORA) to be used in Miami Dade County and other areas where allowed by the Authority Having Jurisdiction (AHJ).

This NOA shall not be valid after the expiration date stated below. The Miami-Dade County Product Control Division (In Miami Dade County) and/or the AHJ (in areas other than Miami Dade County) reserve the right to have this product or material tested for quality assurance purposes. If this product or material fails to perform in the accepted manner, the manufacturer will incur the expense of such testing and the AHJ may immediately revoke, modify, or suspend the use of such product or material within their jurisdiction. BORA reserves the right to revoke this acceptance, if it is determined by Miami-Dade County Product Control Division that this product or material fails to meet the requirements of the applicable building code. This product is approved as described herein, and has been designed to comply with the Florida Building Code, including the High Velocity Hurricane Zone.

**DESCRIPTION: Series "WTG-500" Aluminum Curtain Wall System – L.M.I.**

**APPROVAL DOCUMENT:** Drawing No. S-4085, titled "West Tampa Glass – Series WTG-500", sheets 1 through 13 of 13, dated 07/07/09 with revision #1 dated 04/22/10, prepared by RW Building Consultant, signed and sealed by Ryan J. King, P.E., bearing the Miami-Dade County Product Control Approval stamp with the Notice of Acceptance number and approval date by the Miami-Dade County Product Control Division.

**MISSILE IMPACT RATING: Large Missile Impact Resistant**

**LABELING:** Each unit shall bear a permanent label with the manufacturer's name or logo, city, state and following statement: "Miami-Dade County Product Control Approved", unless otherwise noted herein.

**RENEWAL** of this NOA shall be considered after a renewal application has been filed and there has been no change in the applicable building code negatively affecting the performance of this product.

**TERMINATION** of this NOA will occur after the expiration date or if there has been a revision or change in the materials, use, and/or manufacture of the product or process. Misuse of this NOA as an endorsement of any product, for sales, advertising or any other purposes shall automatically terminate this NOA. Failure to comply with any section of this NOA shall be cause for termination and removal of NOA.

**ADVERTISEMENT:** The NOA number preceded by the words Miami-Dade County, Florida, and followed by the expiration date may be displayed in advertising literature. If any portion of the NOA is displayed, then it shall be done in its entirety.

**INSPECTION:** A copy of this entire NOA shall be provided to the user by the manufacturer or its distributors and shall be available for inspection at the job site at the request of the Building Official. This NOA consists of this page 1 and evidence pages E-1 and E-2, as well as approval document mentioned above.

The submitted documentation was reviewed by **Manuel Perez, P.E.**



NOA No. 09-1202.04  
Expiration Date: October 06, 2015  
Approval Date: October 06, 2010  
Page 1

West Tampa Glass Company

NOTICE OF ACCEPTANCE: EVIDENCE SUBMITTED

**A. DRAWINGS**

1. Manufacturer's die drawings and sections.
2. Drawing No **S-4085**, Sheets 1 through 13 of 13, titled "West Tampa Glass - Series WTG-500", dated 07/07/09 with revision #1 dated 04/22/10, prepared by RW Building Consultants, Inc., signed and sealed by Ryan J. King, P.E.

**B. TESTS**

1. Test reports on:
  - 1) Air Infiltration Test, per FBC, TAS 202-94
  - 2) Uniform Static Air Pressure Test, Loading per FBC TAS 202-94
  - 3) Water Resistance Test, per FBC, TAS 202-94
  - 4) Small Missile Impact Test per FBC, TAS 201-94
  - 5) Large Missile Impact Test per FBC, TAS 201-94
  - 6) Cyclic Wind Pressure Loading per FBC, TAS 203-94along with marked-up drawings and installation diagram of WTG-500 and WTG-700 aluminum curtain wall systems, Series **WTG-500** specimens: #1, 2, 3, 4, 5, and 6 and Series **WTG-700** specimens: 1, 3, 6, 7, 9, 11, 15, 17, 19, 21, 23, 23A, 25, 27, 32, 2, 4, 5, 8, 10, 12, 16, 18, 22, 24A, 26, 28, 33, prepared by Testing Evaluation Laboratories, Inc. Test Report No. **TEL-08-01490001**, dated 01/02/08, signed and sealed by Wendell W. Haney, P.E.
2. Test reports on:
  - 1) Air Infiltration Test, per FBC, TAS 202-94
  - 2) Uniform Static Air Pressure Test, Loading per FBC TAS 202-94
  - 3) Water Resistance Test, per FBC, TAS 202-94
  - 4) Small Missile Impact Test per FBC, TAS 201-94
  - 5) Large Missile Impact Test per FBC, TAS 201-94
  - 6) Cyclic Wind Pressure Loading per FBC, TAS 203-94along with marked-up drawings and installation diagram of WTG-500 and WTG-700 aluminum curtain wall systems, Series **WTG-500** specimens: #40 and 42 and Series **WTG-700** specimens: #36, 37, 39, 36a, 37a, 38, 39a, 41 and 43, prepared by Testing Evaluation Laboratories, Inc. Test Report No. **TEL-01490139**, dated 08/26/09, signed and sealed by Lyndon F. Schmidt, P.E.

**C. CALCULATIONS**

1. Anchor verification calculations and structural analysis, complying with FBC-2007, prepared by RW Building Consultants, Inc., dated 08/01/09, 5/16/10 and 07/28/10, signed and sealed by Ryan J. King, P.E.  
**Complies with ASTM E1300-04**

  
Manuel Perez, P.E.  
Product Control Examiner  
NOA No. 09-1202.04  
Expiration Date: October 06, 2015  
Approval Date: October 06, 2010

West Tampa Glass Company

NOTICE OF ACCEPTANCE: EVIDENCE SUBMITTED

**D. QUALITY ASSURANCE**

1. Miami Dade Building Code Compliance Office (BCCO).

**E. MATERIAL CERTIFICATIONS**

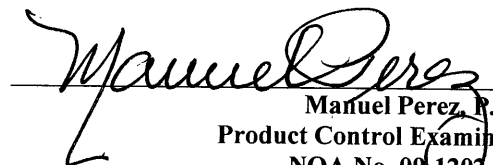
1. Notice of Acceptance No. **07-1116.04** issued to E.I. DuPont DeNemours & Co., Inc. for their "**DuPont Sentry Glass ® Plus**" dated 01/03/08, expiring on 01/14/12.
2. Notice of Acceptance No. **08-0520.08** issued to Solutia Inc. for their "**Vanceva Composites Glass Interlayer**" dated 7/17/08, expiring on 12/11/13.

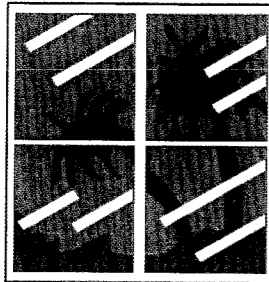
**F. STATEMENTS**

1. Statement letter of conformance and no financial interest, dated May 10, 2010, signed and sealed by Ryan J. King, P.E.

**G. OTHERS**

1. None.

  
Manuel Perez, P.E.  
Product Control Examiner  
NOA No. 09-1207.04  
Expiration Date: October 06, 2015  
Approval Date: October 06, 2010

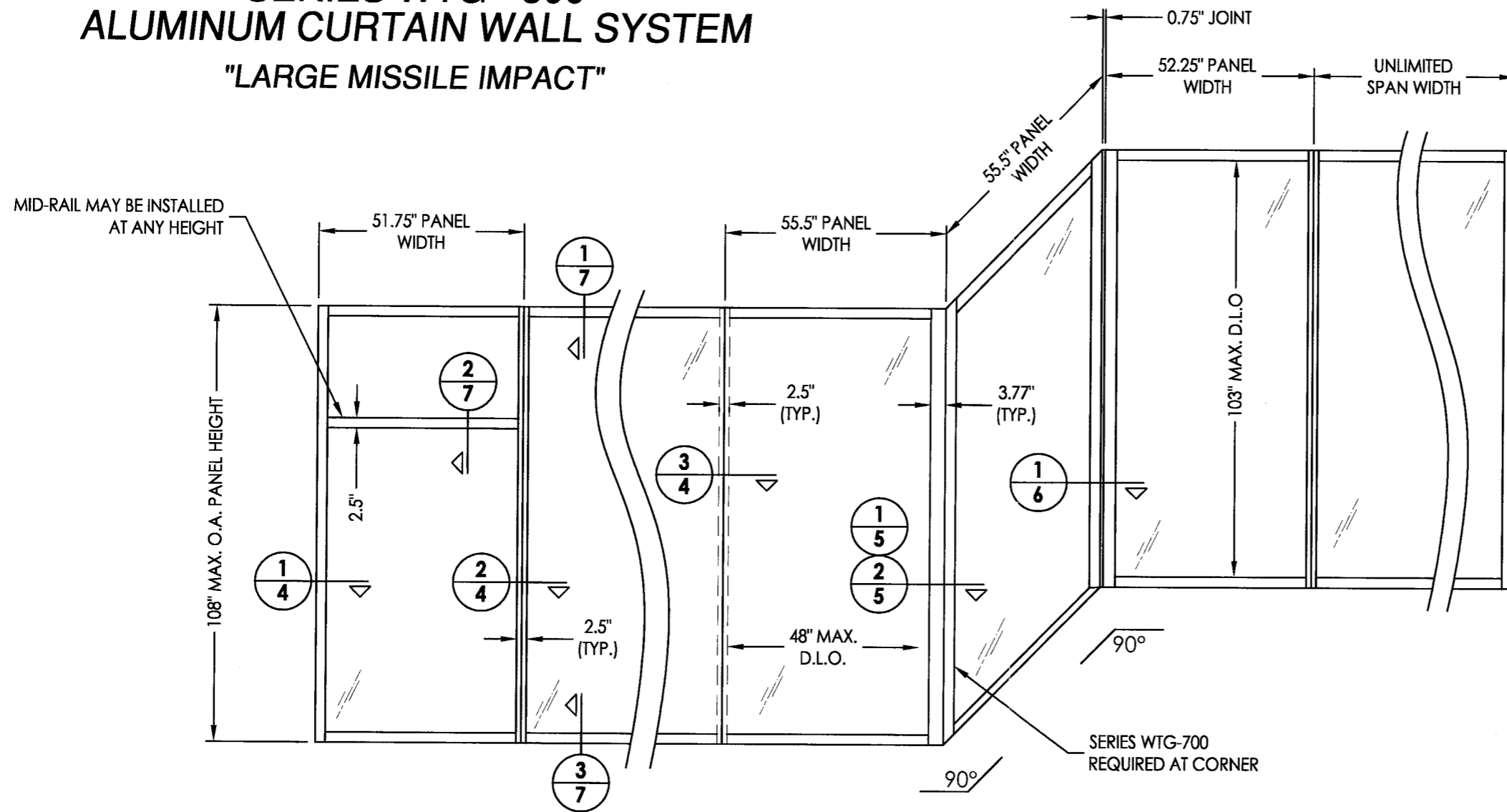


# WEST TAMPA GLASS COMPANY

SINCE 1934

2705 N. 35th STREET  
TAMPA, FLORIDA 33605

## SERIES WTG - 500 ALUMINUM CURTAIN WALL SYSTEM "LARGE MISSILE IMPACT"



Approved as complying with the Florida Building Code  
Date: 05/16/2010  
NOA# 08-1062-04  
Micala Dade Product Control  
By: *Manuel Perez*

Documents Prepared By:  
*R.W.* BUILDING CONSULTANTS, INC.  
P.O. Box 230 Valrico FL 33595  
Phone No.: 813.659.9197  
Florida Board of Professional Engineers  
Certificate of Authorization No. 9813  
*Rydin J. King, P.E.* 7-28-12  
64619

PRODUCT:  
WEST TAMPA GLASS  
SERIES WTG-500  
PART OR ASSEMBLY:  
TYPICAL ELEVATION AND  
DESIGN PRESSURE

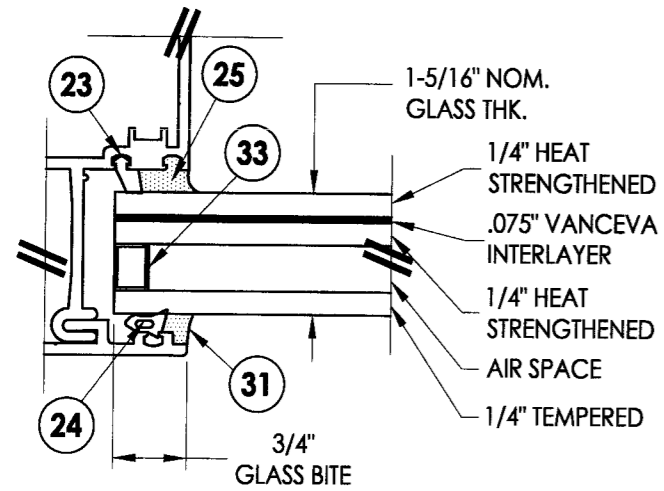
NO.	DATE	REVISIONS
1	04/22/10	REVISED PER DADE COMMENTS

DATE: 07/07/09  
SCALE: N.T.S.  
DWG. BY: DWS  
CHK. BY: LFS  
DRAWING NO.: S-4085  
SHEET 1 OF 13

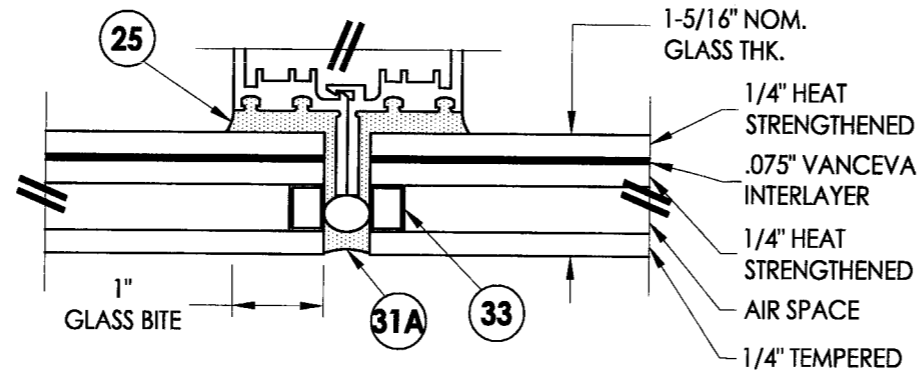
TABLE OF CONTENTS			
SHEET #	DESCRIPTION	SHEET #	DESCRIPTION
1	Typical elevation & design pressure	8	Frame anchoring
2	General notes & glazing details	9	Face cover option details
3	Glazing details	10	Face cover option details
4	Horizontal cross sections	11	Components
5	Horizontal cross sections	12	Components
6	Horizontal cross sections	13	Bill of materials
7	Vertical cross sections		

MAX. D.L.O. DIMENSION	GLASS TYPE	DESIGN PRESSURE (PSF)	
		POSITIVE	NEGATIVE
48.00" x 103.00"	G1, G2, G7, G8, G18, G19	+75.0	-75.0

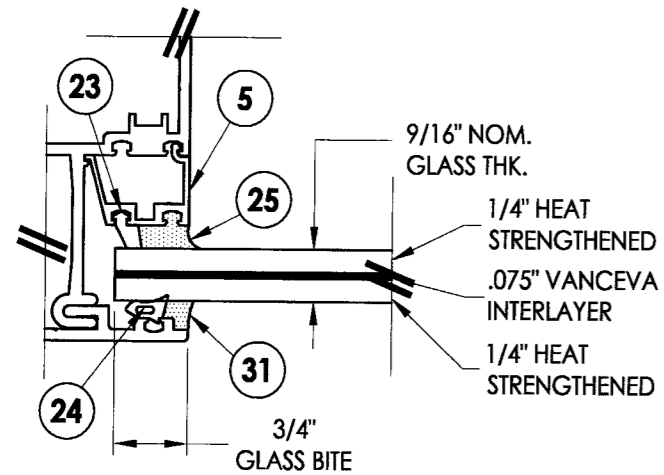
R:\A - Projects\Project Folders\proj\_1401-1500\PE 1478\DWG Drawings\WTC-500\S-4085.dwg\_1-2



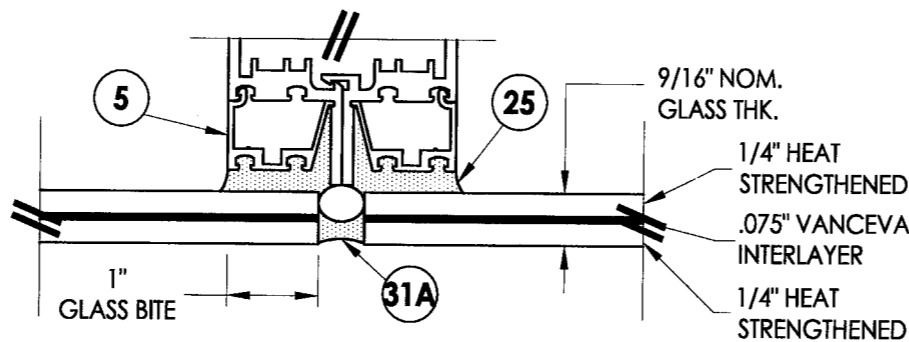
**G1 GLAZING DETAIL**  
Wet-glazed



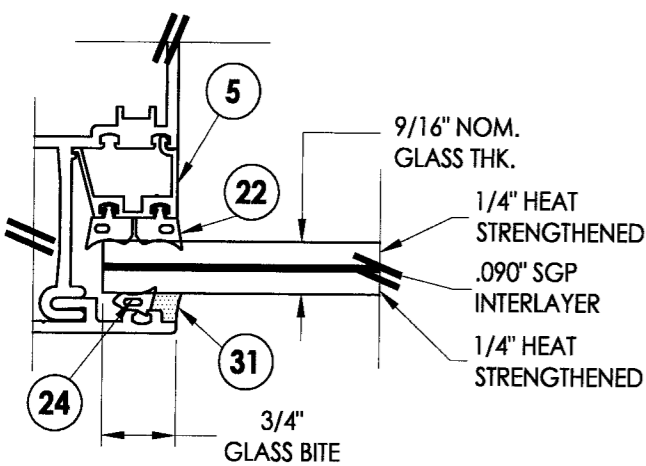
**G1 GLAZING DETAIL**  
Butt-glazed



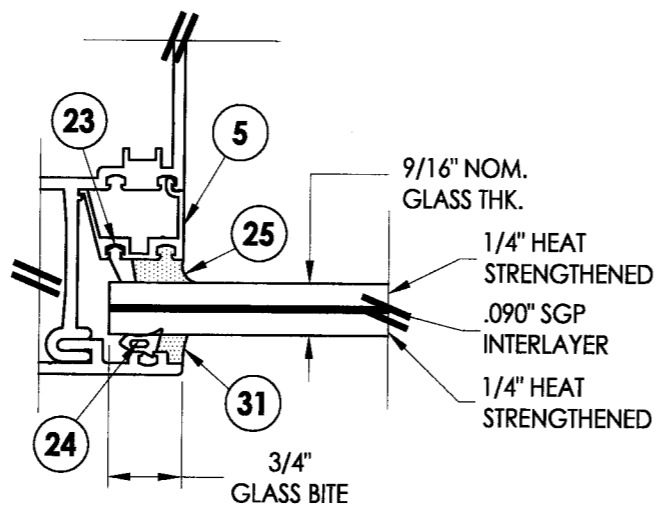
**G2 GLAZING DETAIL**  
Wet-glazed



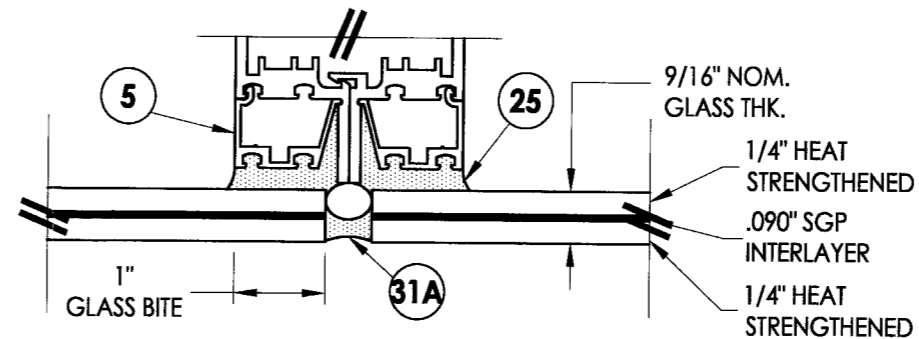
**G2 GLAZING DETAIL**  
Butt-glazed



**G7 GLAZING DETAIL**  
Dry-glazed



**G7 GLAZING DETAIL**  
Wet-glazed



**G7 GLAZING DETAIL**  
Butt-glazed

**GENERAL NOTES**

1. This product has been evaluated and is in compliance with the 2007 Florida Building Code (FBC) structural requirements including the "High Velocity Hurricane Zone" (HVHZ).
2. Product anchors shall be as listed and spaced as shown on details.
3. When used in the "HVHZ" this product complies with Section 1626 of the Florida Building Code and does not require an impact resistant covering.
4. When used in areas outside of the "HVHZ" requiring wind borne debris protection this product complies with Section 1609.1.2 of the 2007 FBC and does not require an impact resistant covering. This product meets missile level "D" and includes Wind Zone 4 as defined in ASTM E1996.
5. Site conditions and system reinforcement that deviate from the details of this drawing require further engineering analysis by a licensed engineer or registered architect.
6. This product meets water infiltration requirements for "HVHZ" (Tested per ASTM E331 @ 20.0 PSF positive pressure and tested per AAMA 501.1 @ 20.0 PSF positive pressure).
7. For design pressure rating see chart sheet 1.
8. All steel in contact with aluminum to be painted or plated.
9. Elevation shown is for illustration only. Window wall may be constructed with an unlimited width and in any combination of units/glazing shown provided the limits for max. panel height, width and D.L.O. are maintained. Mid-rail joints may be installed at any height.

- NOTES:**
1. Head, sill & horizontal glazing details are similar to jamb details shown.
  2. See sheets 9 & 10 for face cover option details.

Documents Prepared By:  
**RW** BUILDING CONSULTANTS, INC.  
 P.O. Box 230 Valrico FL 33595  
 Phone No.: 813.659.9197  
 Florida Board of Professional Engineers  
 Certificate Of Authorization No. 9813  
 Ryan King, P.E. 7-29-10  
 No. 64619

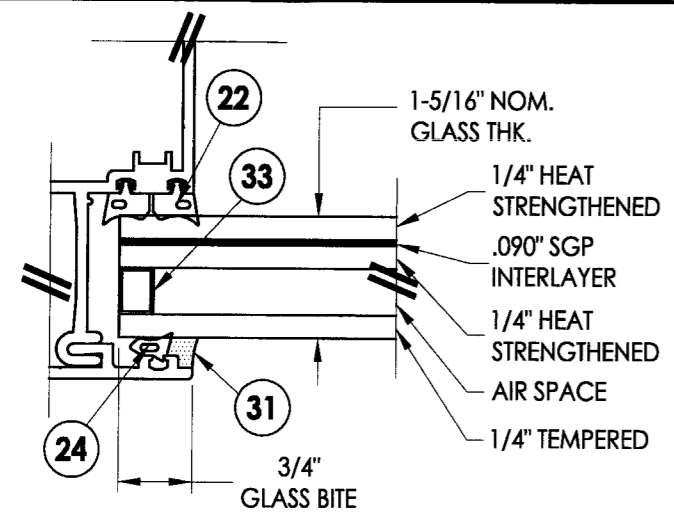
PRODUCT: WEST TAMPA GLASS  
 SERIES WTC-500  
 PART OR ASSEMBLY:  
 GENERAL NOTES &  
 GLAZING DETAILS

NO.	DATE	REVISED PER	DADE	COMMENTS	JK	BY
1	4/22/10					

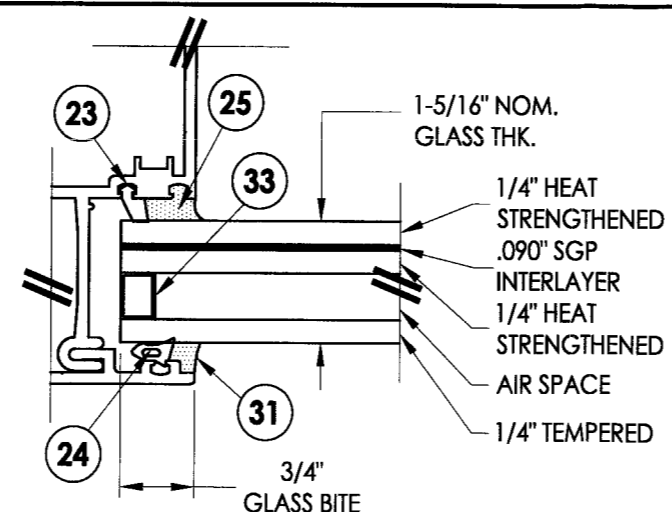
Approved as complying with the  
 Florida Building Code  
 Date: Oct 6 2010  
 NOA# 09-1702.04  
 Miami Dade Product Control  
 Division  
 By: Manuel Perez

DATE: 07/07/09  
 SCALE: N.T.S.  
 DWG. BY: DWS  
 CHK. BY: LFS  
 DRAWING NO.: S-4085  
 SHEET 2 OF 13

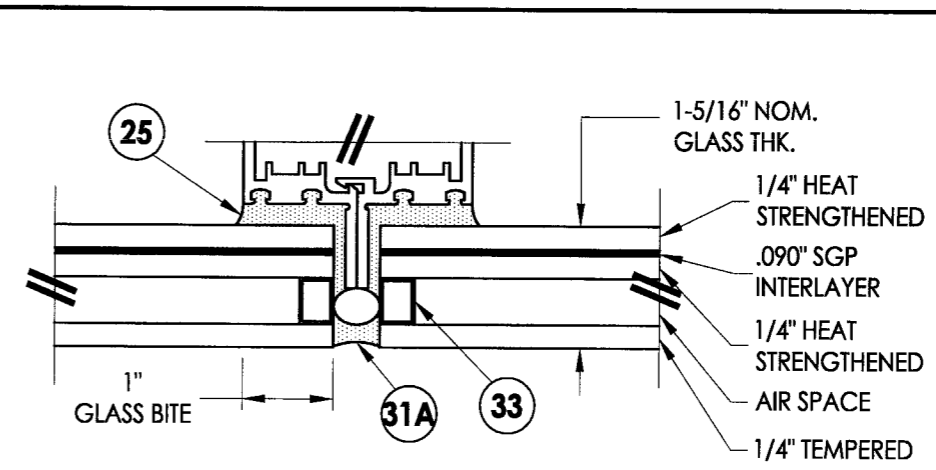
R:\A - Projects\Project - Eolders\proj.1401-1500\PE.14781D - RWBC Drawings\WTC.500LS-4085.dwg, 1-3



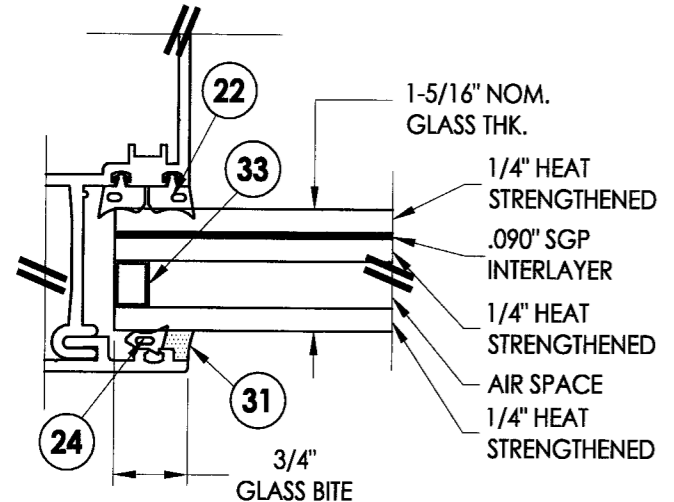
**G8 GLAZING DETAIL**  
Dry-glazed



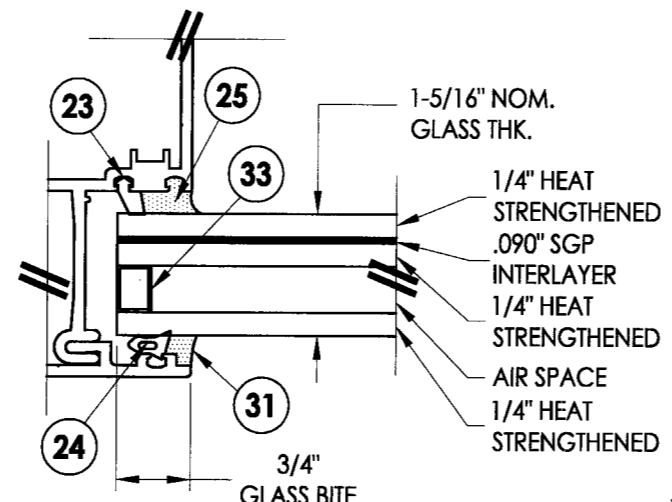
**G8 GLAZING DETAIL**  
Wet-glazed



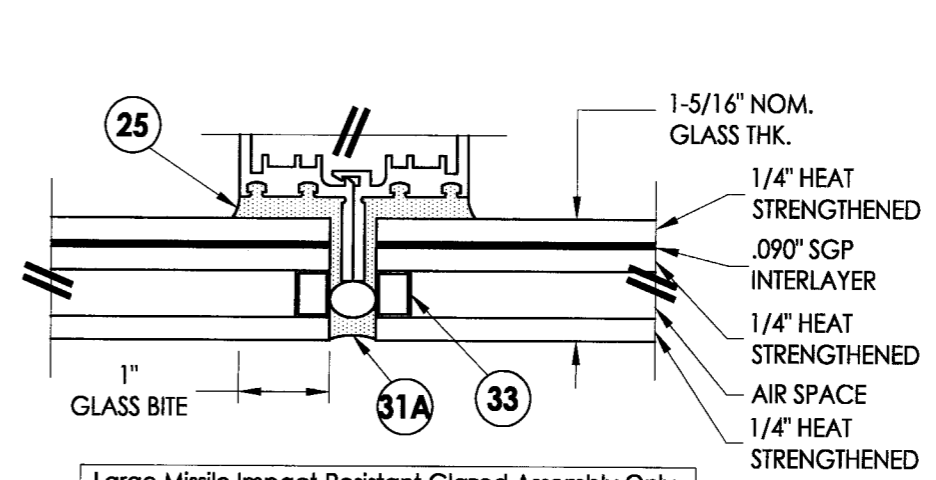
**G8 GLAZING DETAIL**  
Butt-glazed



**G18 GLAZING DETAIL**  
Dry-glazed

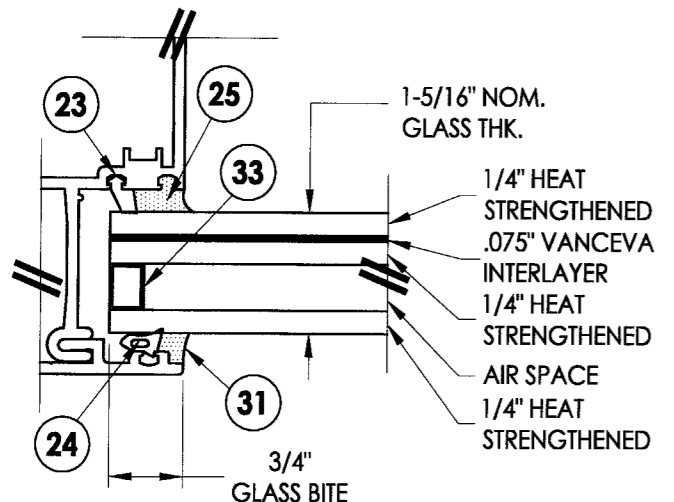


**G18 GLAZING DETAIL**  
Wet-glazed

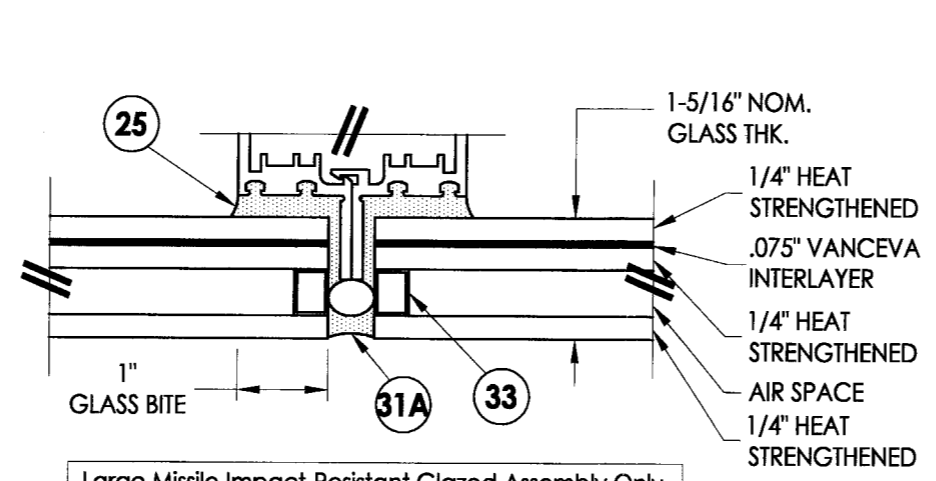


**G18 GLAZING DETAIL**  
Butt-glazed

Large Missile Impact-Resistant Glazed Assembly Only  
(for installation up to 30 ft. above ground maximum)



**G19 GLAZING DETAIL**  
Wet-glazed



**G19 GLAZING DETAIL**  
Butt-glazed

Large Missile Impact-Resistant Glazed Assembly Only  
(for installation up to 30 ft. above ground maximum)

- NOTES:**
1. Head, sill & horizontal glazing details are similar to jamb details shown.
  2. See sheets 9 & 10 for face cover option details.

Documents Prepared By:  
**RW** BUILDING CONSULTANTS, INC.  
P.O. Box 230 Valrico FL 33595  
Phone No.: 813.659.9197  
Florida Board of Professional Engineers  
Certificate Of Authorization No. 9813  
*Ryan J. King* 7-26-10  
Ryan J. King, P.E. No. 64619

PRODUCT: WEST TAMPA GLASS  
SERIES WTC-500  
PART OR ASSEMBLY: GLAZING DETAILS

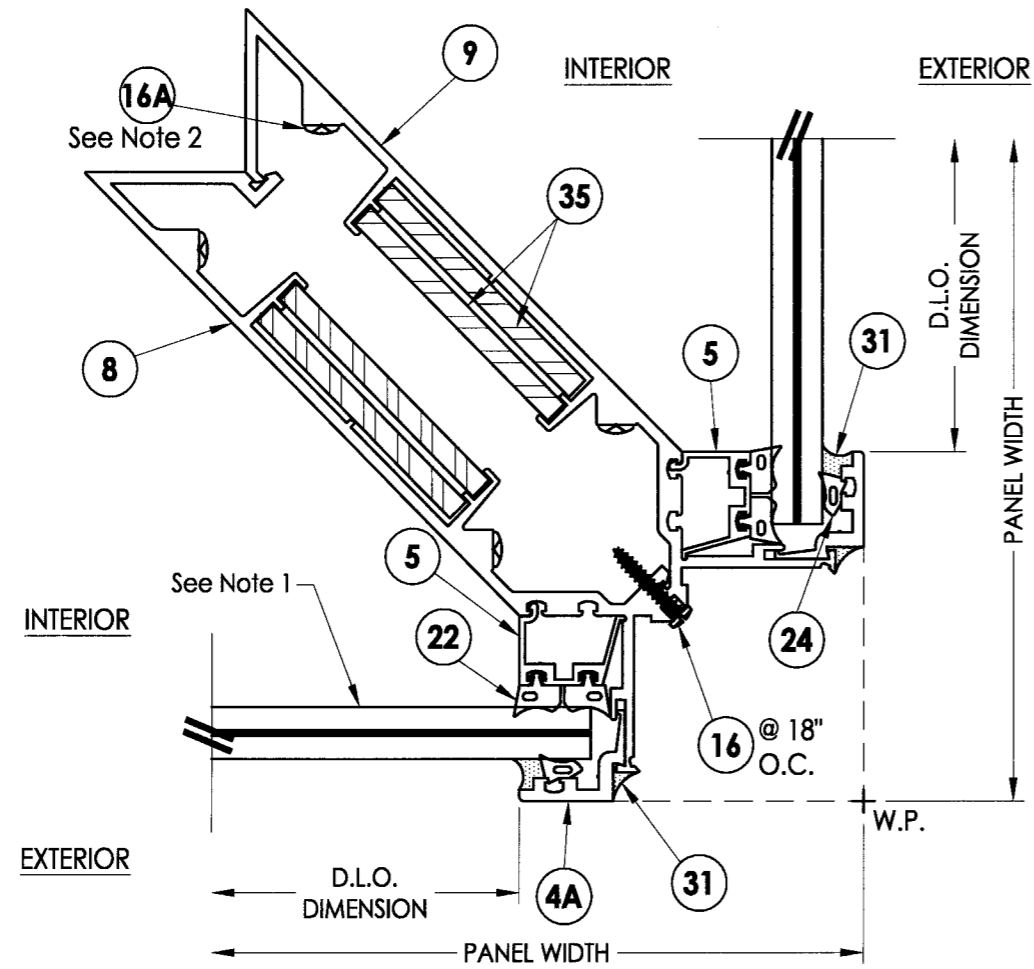
NO.	DATE	REVISED PER	DADE	COMMENTS	JK	BY
1	4/22/10					

DATE: 07/07/09  
SCALE: N.T.S.  
DWG. BY: DWS  
CHK. BY: LFS  
DRAWING NO.: S-4085  
SHEET 3 of 13

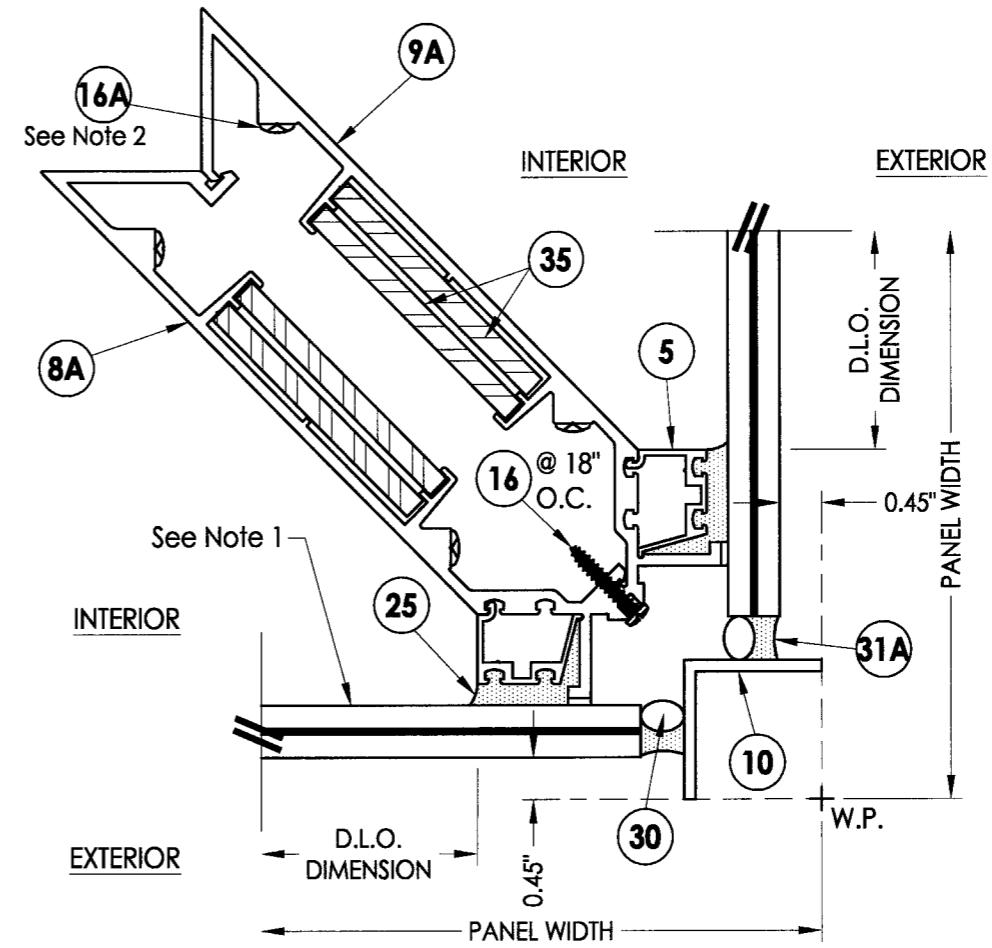
Approved as complying with the Florida Building Code  
Date: **OCT 6 2016**  
NOA# **09-1202-04**  
Miami Code Product Control  
By: *Manuel Perez*



R:\A - Projects\Project Folders\proj\_1401-1500\PE-1478\DWG-RWBC Drawings\WTC-500\S-4085.dwg - 1-5



**1 HORIZONTAL CROSS SECTION**  
**5** Exterior 90 deg. Corner Mullion Detail w/ Trim Dry Glazed Option



**2 HORIZONTAL CROSS SECTION**  
**5** Exterior 90 deg. Corner Mullion Detail w/o Trim Structural Glazed Option

- NOTES:
- See sheets 2 & 3 for glazing option details and sheets 9 & 10 for face cover option details.
  - Attach the head, sill and intermediate horizontal to the jambs/mullions w/ (3) item 16A at each end. See corner connection detail on sheet 6.

Approved as complying with the Florida Building Code  
 Date OCT 6 2010  
 NO. 09-1202.04  
 Miami Dade Product Control  
 By Maurice Perry

DATE: 07/07/09  
 SCALE: N.T.S.  
 DWG. BY: DWS  
 CHK. BY: LFS  
 DRAWING NO.: S-4085  
 SHEET 5 OF 13

Documents Prepared By: **RW** BUILDING CONSULTANTS, INC.  
 P.O. Box 230 Valrico FL, 33595  
 Phone No.: 813.659.9197  
 Florida Board of Professional Engineers  
 Certificate Of Authorization No. 9813  
 Ryan J. King, P.E. No. 64619

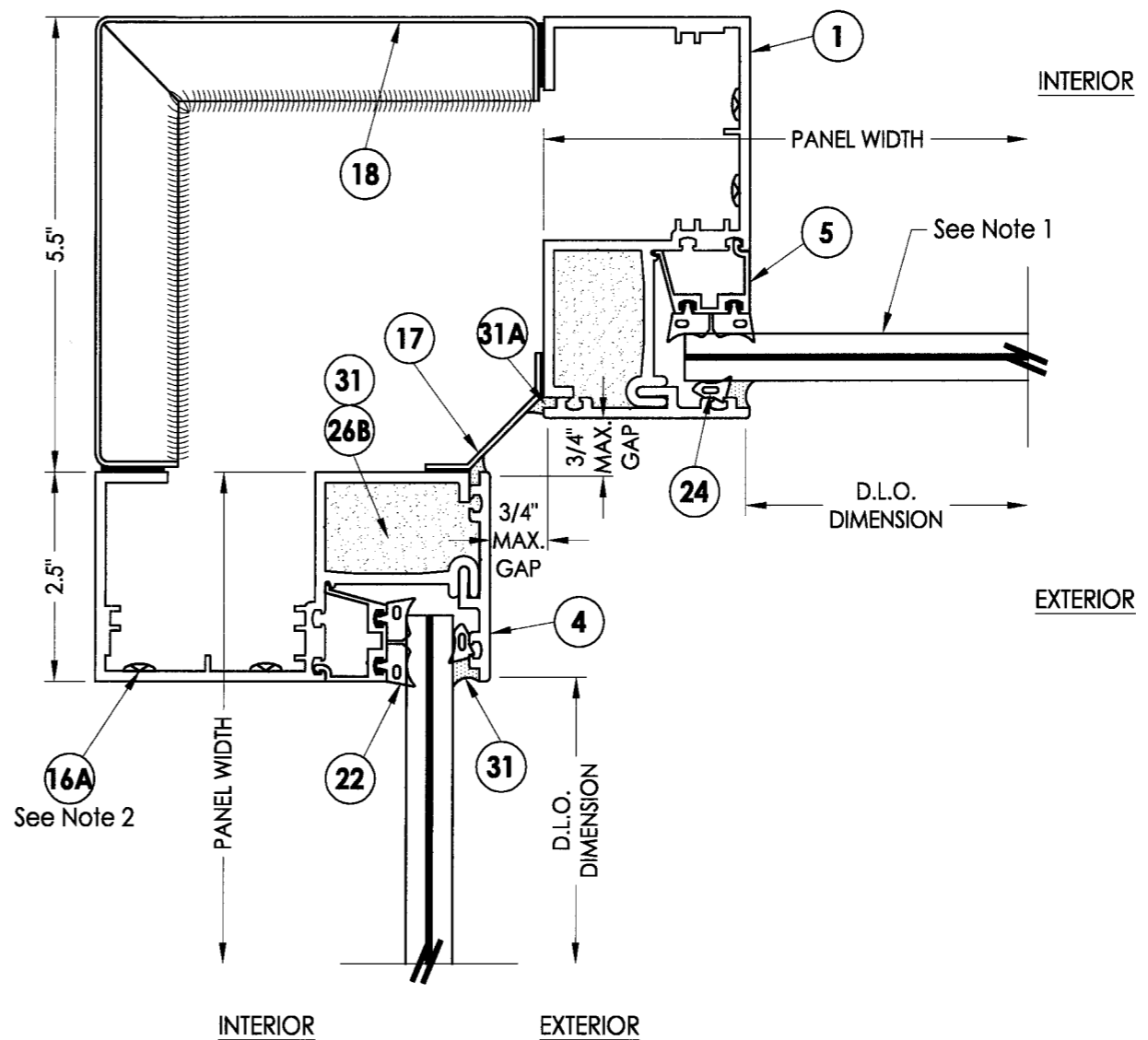
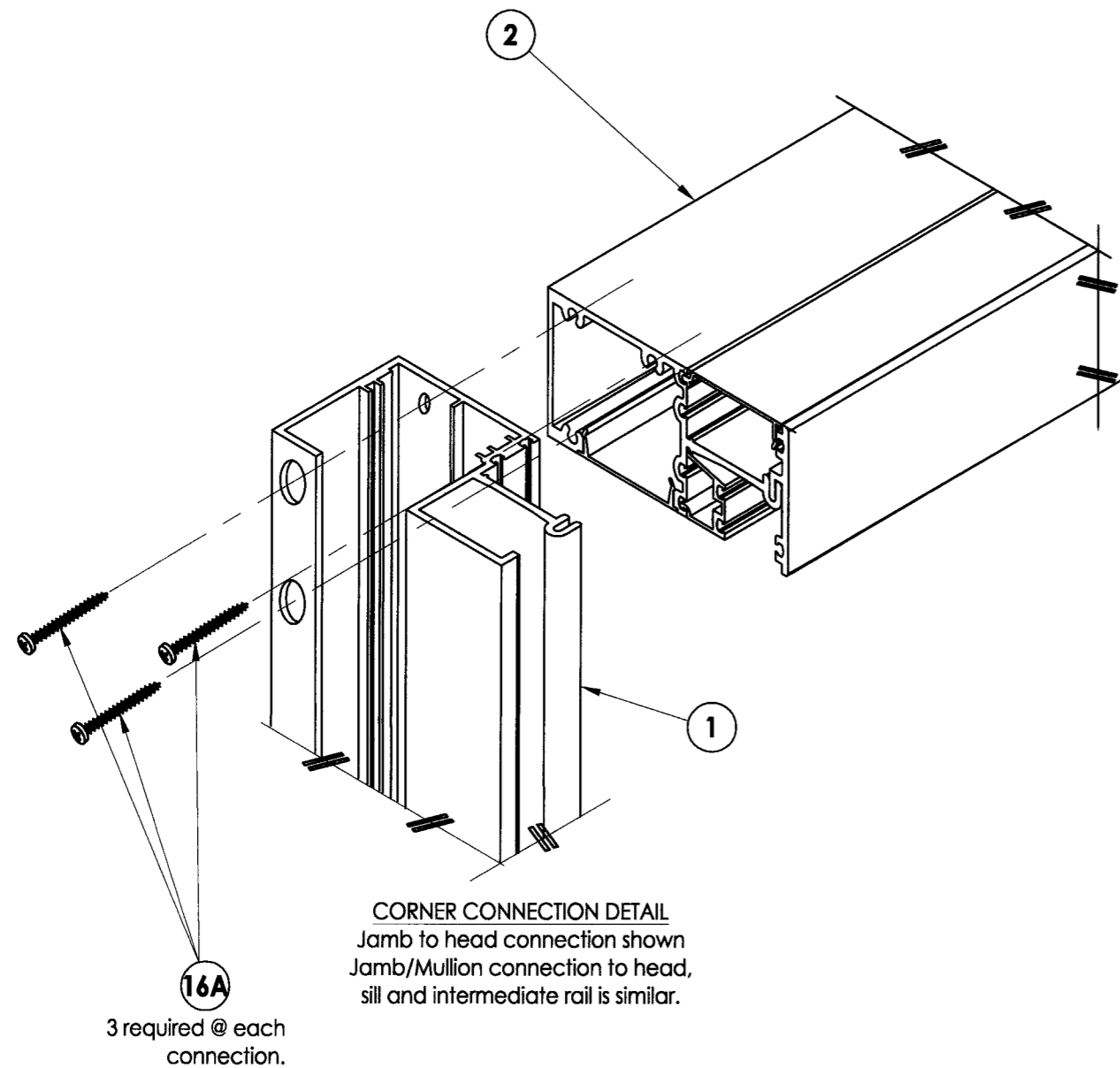
PRODUCT: WEST TAMPA GLASS SERIES WTC-500  
 PART OR ASSEMBLY: HORIZONTAL CROSS SECTIONS

NO.	DATE	REVISED PER	DADE COMMENTS	JK	BY
1	4/22/10				

REVISIONS

© 2009 R.W. BUILDING CONSULTANTS INC.

R:\A - Projects\Project Folders\proj 1401-1500\PE 1478\D - RWBC Drawings\WTG-500\S-4085\S-4085.dwg, 1-6



**1** **HORIZONTAL CROSS SECTION**  
**6** Interior 90 deg. Corner Mullion Detail  
Dry Glazed Option

- NOTES:**
1. See sheets 2 & 3 for glazing option details and sheets 9 & 10 for face cover option details.
  2. Attach the head, sill and intermediate horizontal to the jambs/mullions w/ (3) item 16A at each end. See corner connection detail on this sheet.

Approved as complying with the  
Florida Building Code  
Date Oct. 6, 2010  
NGAN 09-1202.04  
Relaxed Bldg Product Control  
By Manuel Perez

DATE:	07/07/09
SCALE:	N.T.S.
DWG. BY:	DWS
CHK. BY:	LFS
DRAWING NO.:	S-4085
SHEET	6 OF 13

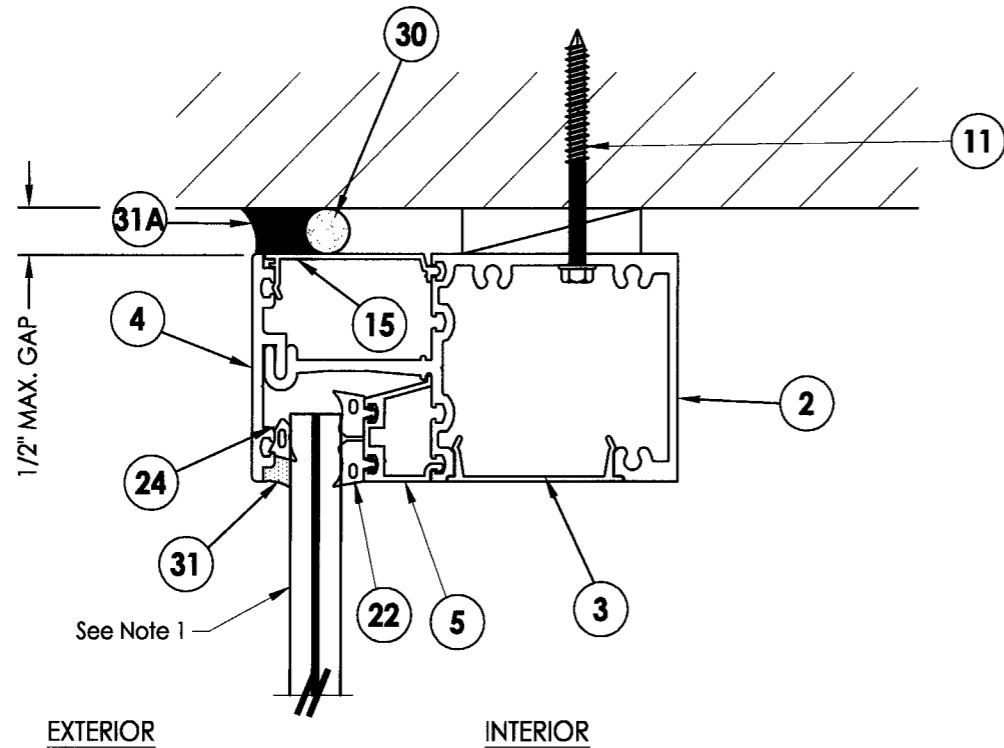
Documents Prepared By:  
**RW** BUILDING CONSULTANTS, INC.  
P.O. Box 230 Valrico FL 33595  
Phone No.: 813.659.9197  
Florida Board of Professional Engineers  
Certificate Of Authorization No. 9813  
*Ryan J. King*  
Ryan J. King, P.E. No. 64619

PRODUCT:  
WEST TAMPA GLASS  
SERIES WTG-500  
PART OR ASSEMBLY:  
HORIZONTAL CROSS SECTIONS

NO.	DATE	REVISED PER	DADE	COMMENTS	JK	BY
1	4/22/10					

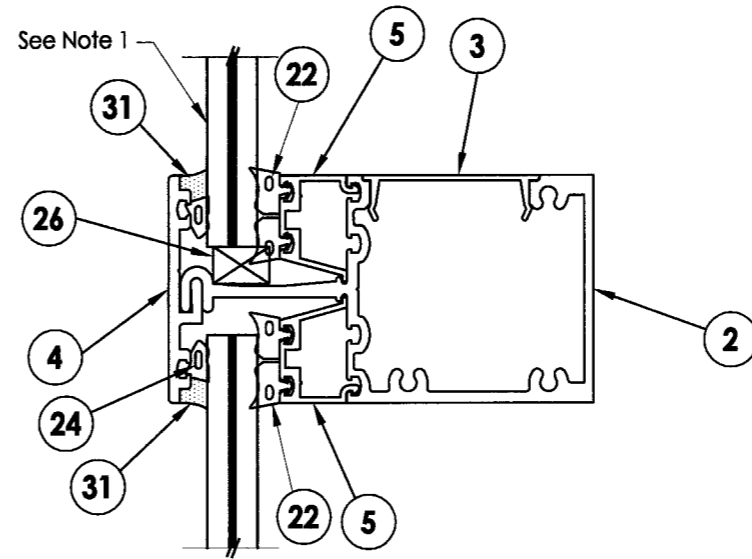
REVISIONS

R:\A - Projects\Project Folders\proj\_1401-1500\PE 1478\DWG\Drawings\WTG-500\S-4085.dwg, 1-7



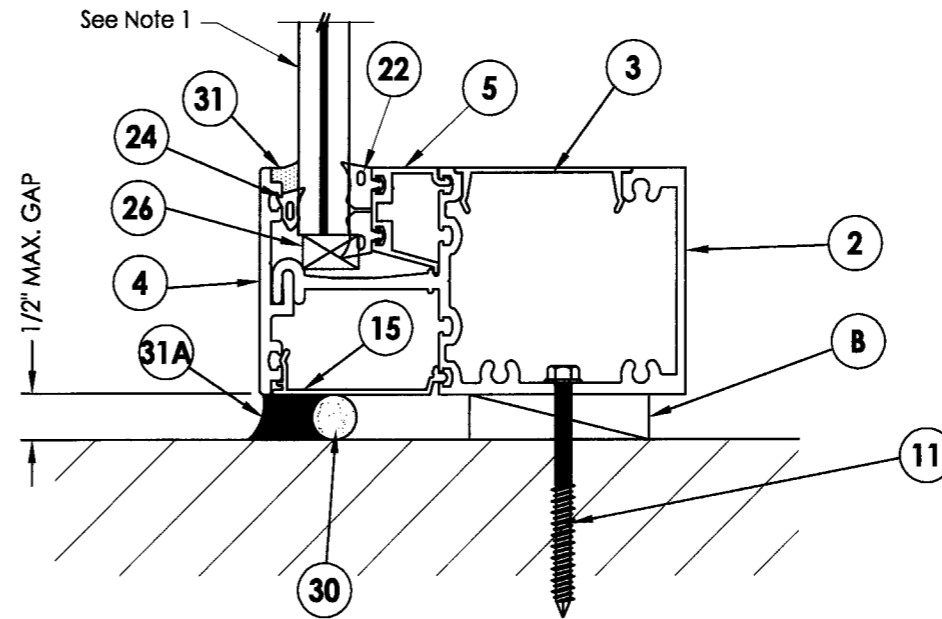
**1 VERTICAL CROSS SECTION**  
7 Head Detail  
Dry Glazed Option

EXTERIOR



**2 VERTICAL CROSS SECTION**  
7 Intermediate Horizontal Mullion Detail  
Dry Glazed Option

INTERIOR



**3 VERTICAL CROSS SECTION**  
7 Sill Detail  
Dry Glazed Option

NOTE:  
1. See sheets 2 & 3 for glazing option details and sheets 9 & 10 for face cover option details.

Approved as complying with the Florida Building Code  
Date: 08/19/2010  
NCAS: 08-1202-04  
Miami Date Product Control  
By: Manuel [Signature]

Documents Prepared By:  
**RW** BUILDING CONSULTANTS, INC.  
P.O. Box 230 Vairico FL 33595  
Phone No.: 813.659.9197  
Florida Board of Professional Engineers  
Certificate of Authorization No. 9813  
Ryan J. King, P.E. No. 64619

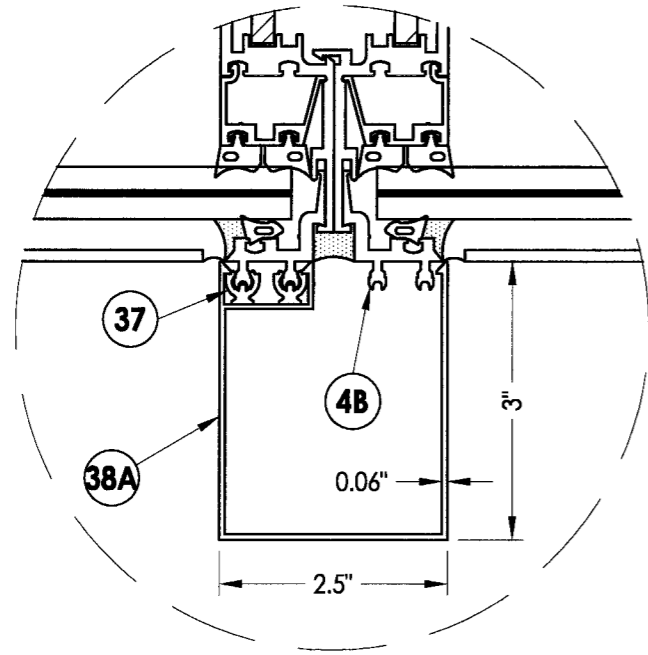
PRODUCT: WEST TAMPA GLASS  
SERIES WTG-500  
PART OR ASSEMBLY: VERTICAL CROSS SECTIONS

NO.	DATE	REVISED PER DADE COMMENTS	JK	BY
1	4/22/10			

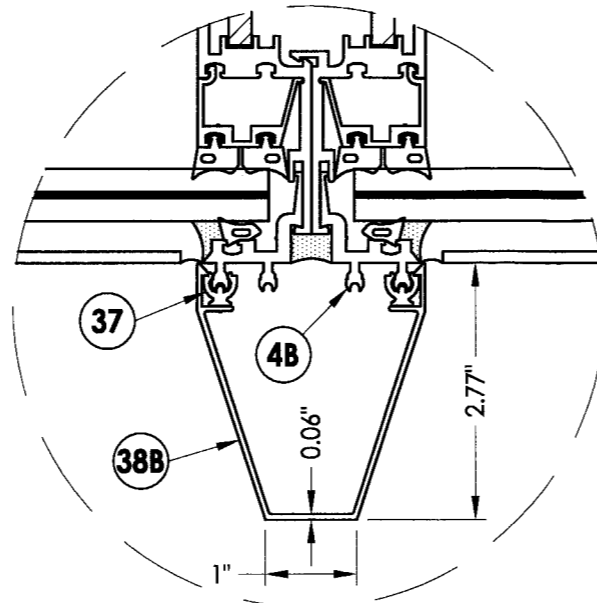
DATE: 07/07/09  
SCALE: N.T.S.  
DWG. BY: DWS  
CHK. BY: LFS  
DRAWING NO.: S-4085  
SHEET 7 OF 13



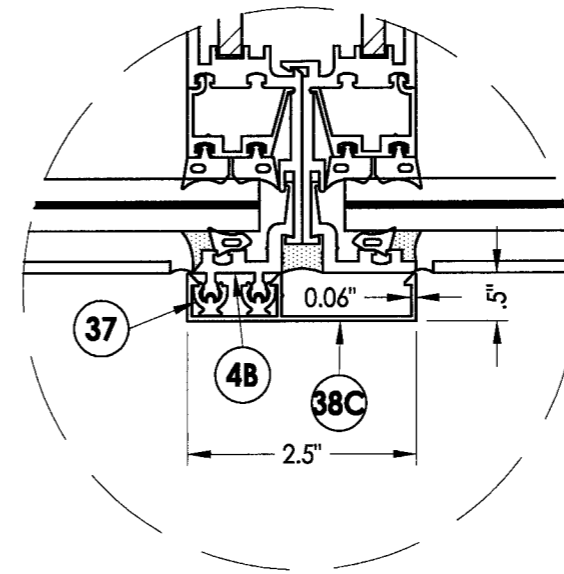
R:\A - Projects\Project Folders\proj\_1401-1500\PE 1478\DWG Drawings\WTG-500\S-4085.dwg\_1-9



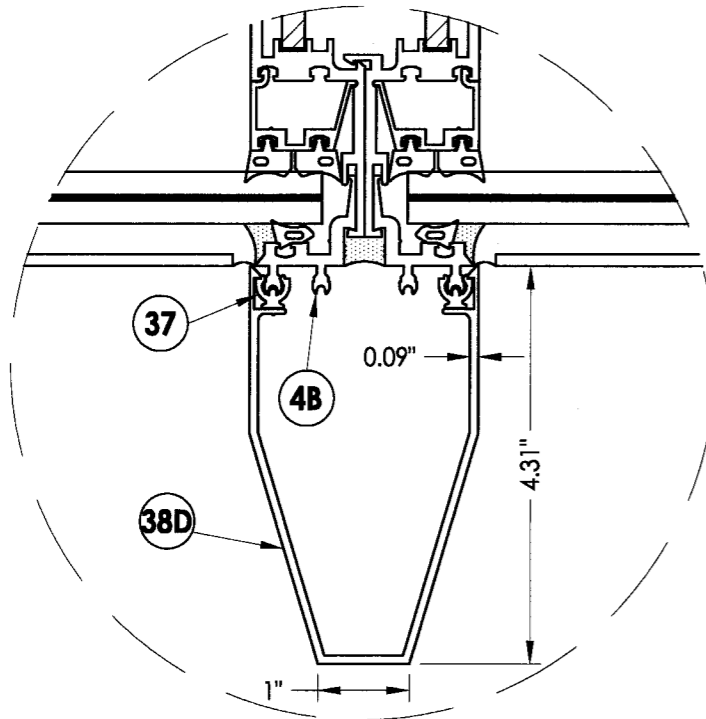
DEEP SQUARE VERTICAL FACE COVER



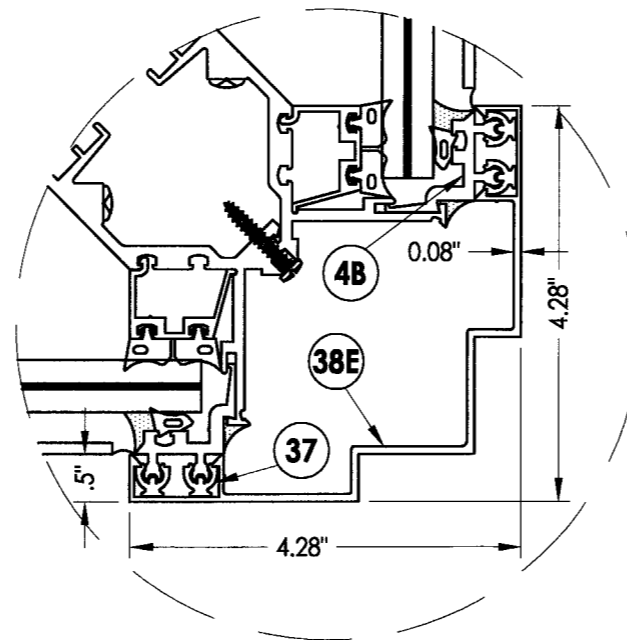
HALF DEEP VERTICAL FACE COVER



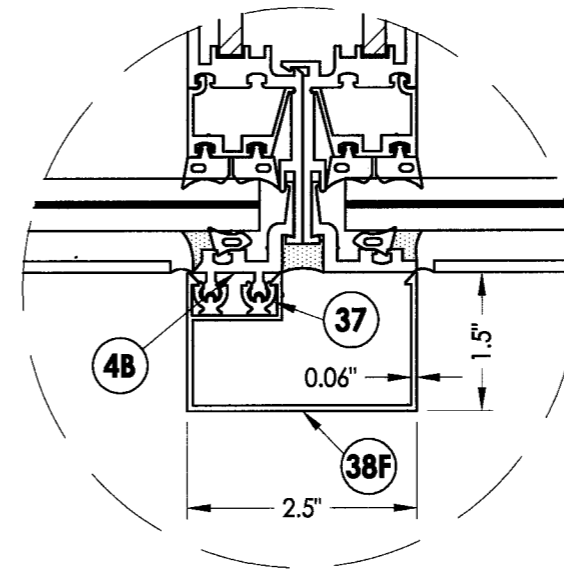
TYPICAL FACE COVER



DEEP VERTICAL FACE COVER



TYPICAL CORNER FACE COVER



HALF DEEP SQUARE VERTICAL FACE COVER

Approved as complying with the Florida Building Code  
 Date: 08/19/2010  
 NO. 081-1202-04  
 Minimal Code Project Control  
 By: Manuel Perez

PRODUCT:

WEST TAMPA GLASS  
 SERIES WTG-500

PART OR ASSEMBLY:

FACE COVER OPTION DETAILS

Documents Prepared By:

RW BUILDING CONSULTANTS, INC.  
 P.O. Box 230 Valrico FL 33595  
 Phone No.: 813.659.9197  
 Florida Board of Professional Engineers  
 Certificate of Authorization No. 9913  
 Ryan J. King, P.E. No. 64619

NO.	DATE	REVISED PER	DADE	COMMENTS	JK	BY
1	4/22/10					

REVISIONS

DATE: 7/07/09

SCALE: N.T.S.

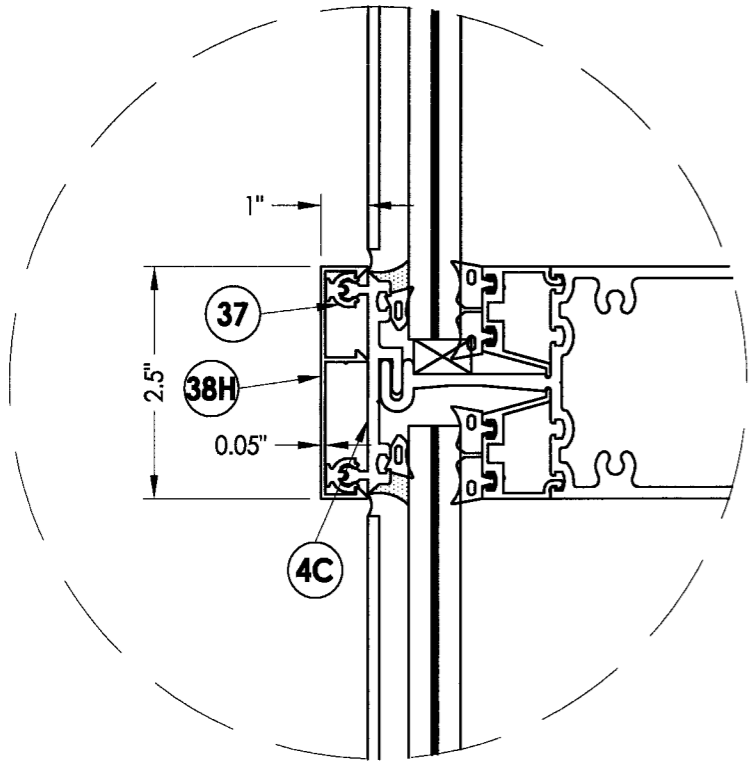
DWG. BY: DWS

CHK. BY: LFS

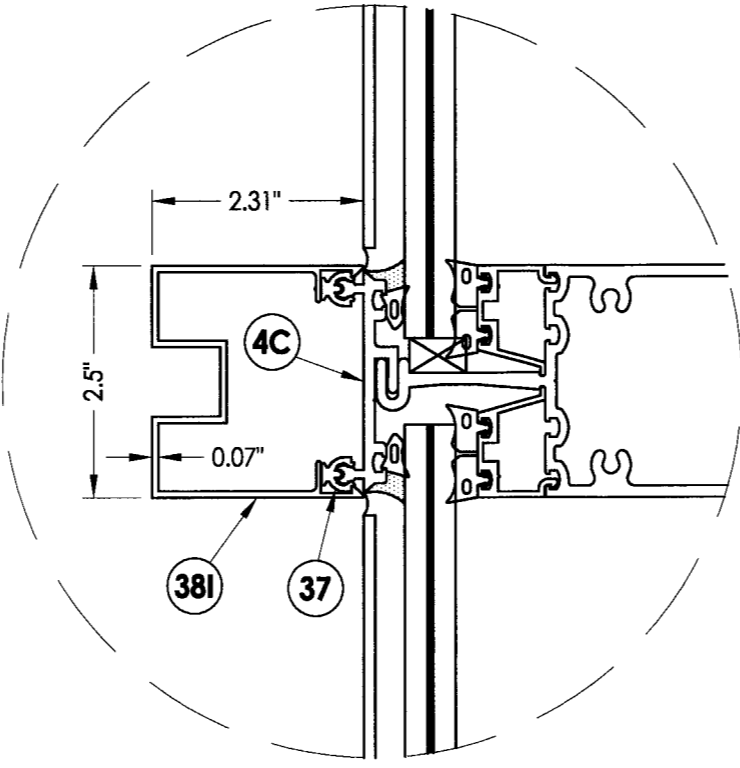
DRAWING NO.: S-4085

SHEET 9 OF 13

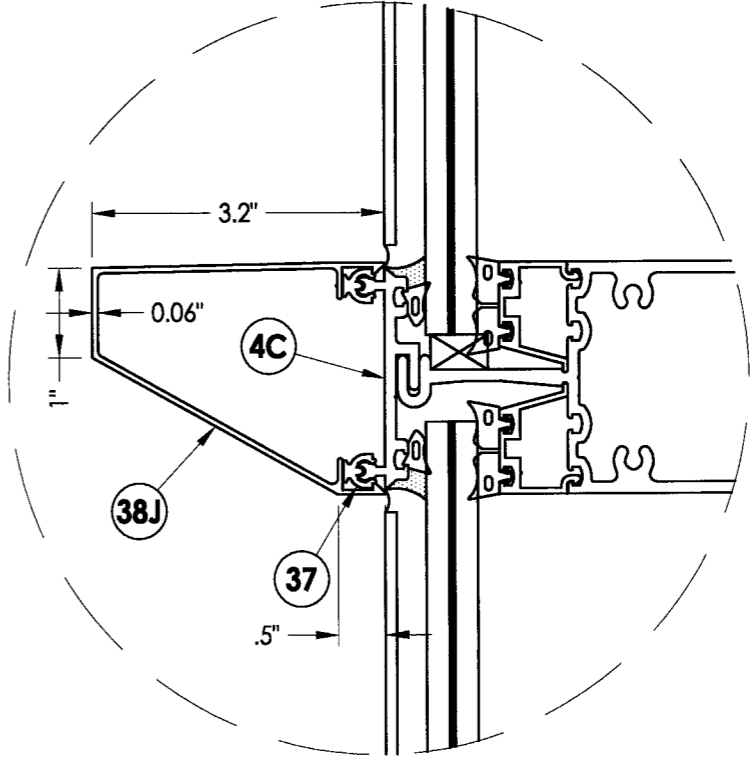
R:\A - Projects\Project Folders\proj\_1401-1500\PE\_1478\ID\_RWBC Drawings\WTG-500\S-4085.dwg...1-10



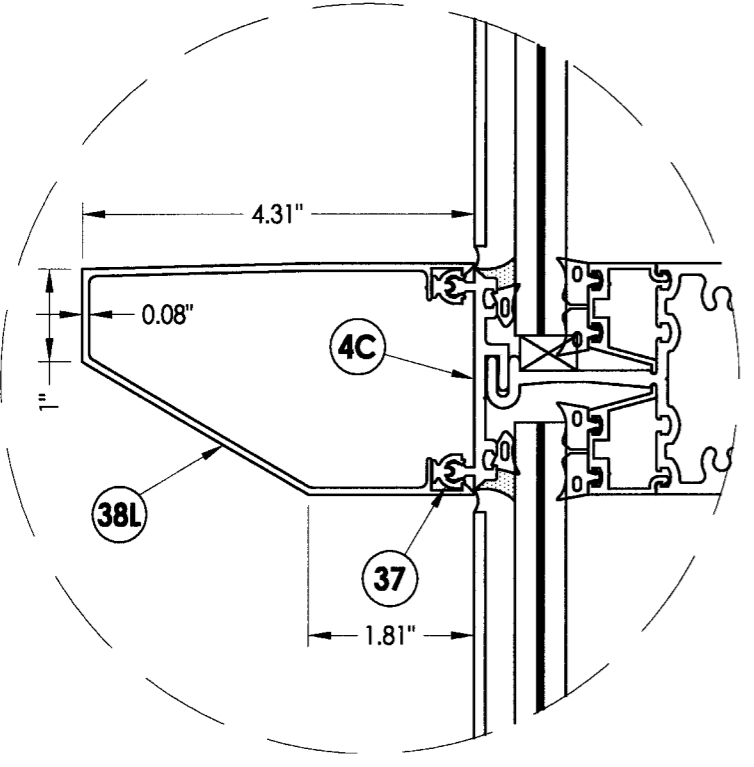
TYPICAL FACE COVER



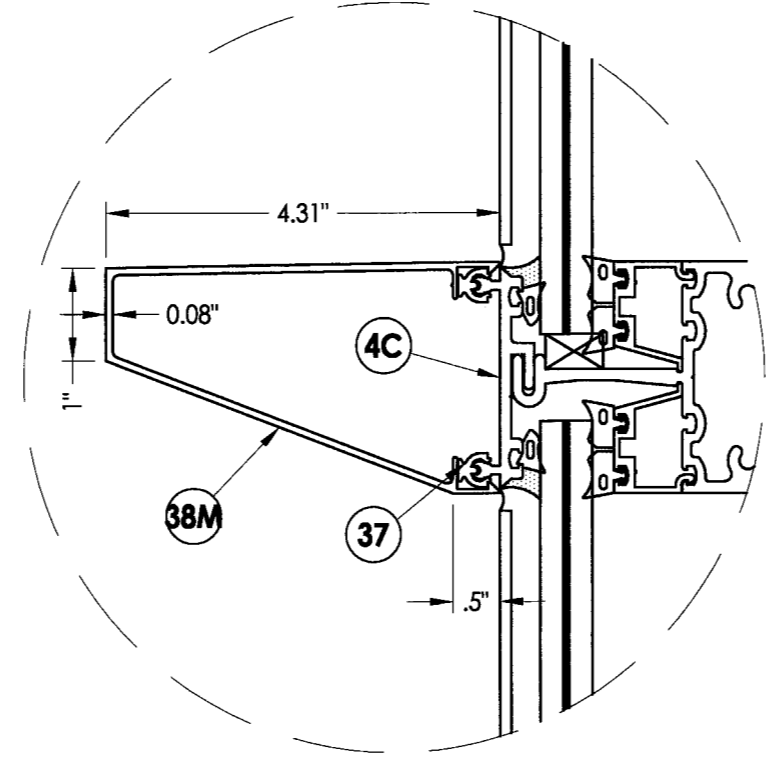
NOTCHED HORIZONTAL FACE COVER



HALF DEEP HORIZONTAL FACE COVER



DEEP SLOPED HORIZONTAL FACE COVER



DEEP SLOPED HORIZONTAL FACE COVER OPTION 2

Documents Prepared By:  
**RW** BUILDING CONSULTANTS, INC.  
 P.O. Box 230 Valrico FL 33595  
 Phone No.: 813.659.9197  
 Florida Board of Professional Engineers  
 Certificate of Authorization No. 9813  
*Manuel Perez* 7-28-10  
 Ryan J. King, P.E. No. 64619

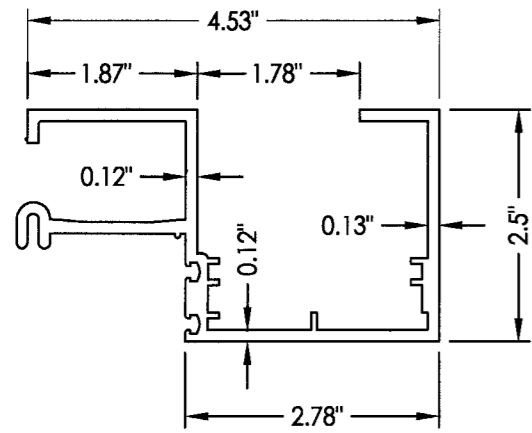
PRODUCT:  
 WEST TAMPA GLASS  
 SERIES WTG-500  
 PART OR ASSEMBLY:  
 FACE COVER OPTION DETAILS

NO.	DATE	REVISIONS	BY
1	4/22/10	REVISED PER DADE COMMENTS	JK

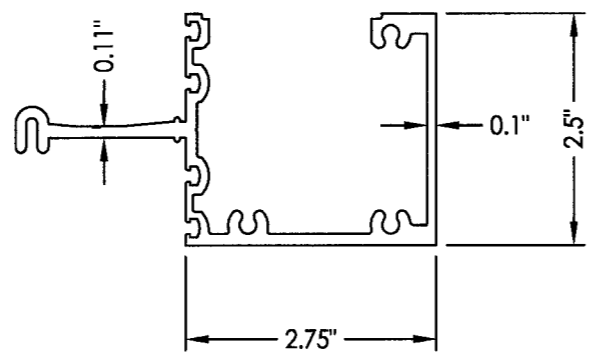
Approved as complying with the Florida Building Code  
 Date: *Oct 9 2010*  
 NOA#: *09-1202-04*  
 Miami Dade Product Control  
 By: *Manuel Perez*

DATE: 7/07/09  
 SCALE: N.T.S.  
 DWG. BY: DWS  
 CHK. BY: LFS  
 DRAWING NO.: S-4085  
 SHEET 10 OF 13

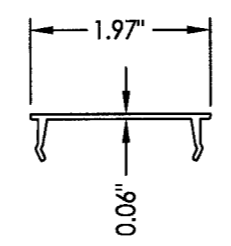
P:\A - Projects\Project Folders\proj.1401-1500\PE.1478\LD\_RWBC Drawings\WTG-500LS-4085.dwg, 1-11



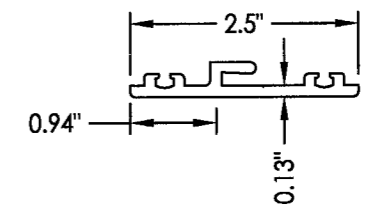
1 JAMB



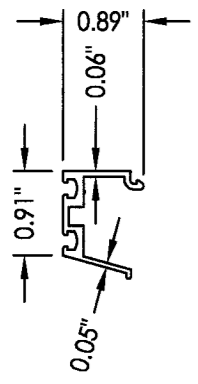
2 HEAD & SILL



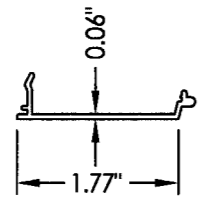
3 HEAD, SILL & INTERMEDIATE SNAP COVER



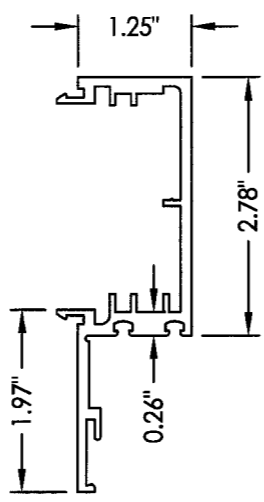
4 GLASS RETAINER  
Head, sill & horizontal



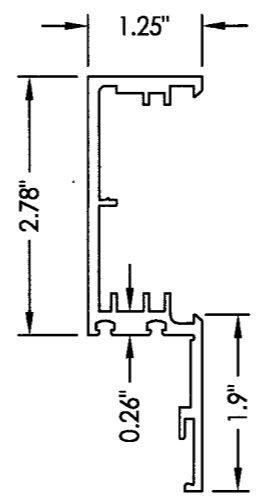
5 GLAZING ADAPTOR



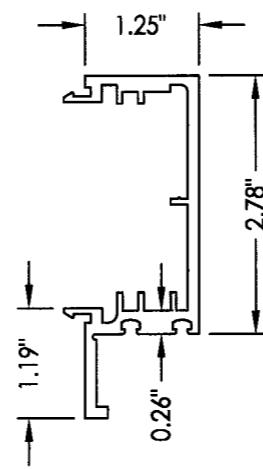
6 HEAD & SILL POCKET FILLER



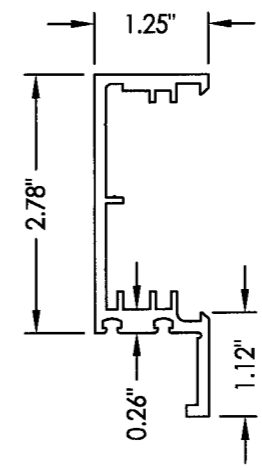
12 MULLION MALE



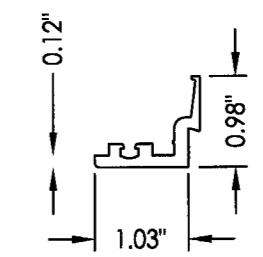
13 MULLION FEMALE



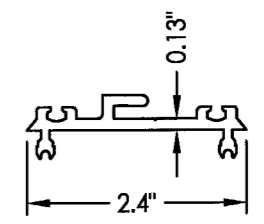
12A MULLION MALE



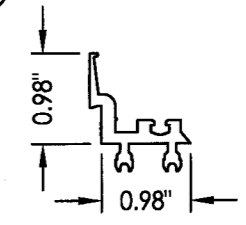
13A MULLION FEMALE



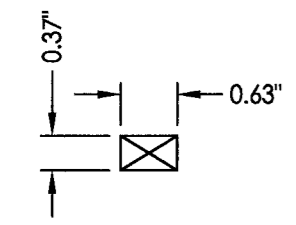
4A GLASS RETAINER



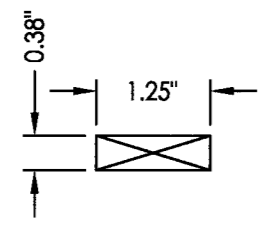
4B GLASS RETAINER



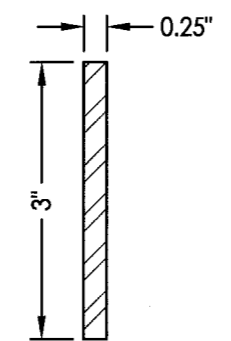
4C GLASS RETAINER



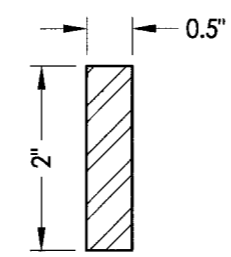
35 SETTING BLOCK



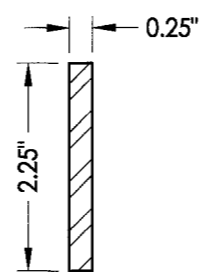
36 SETTING BLOCK



35 REINFORCEMENT



36D REINFORCEMENT



36C REINFORCEMENT



37 PLASTIC CLIP



23 SPACER GASKET  
Interior



22 PRE-SET GASKET  
Interior



24 WEDGE GASKET  
Exterior

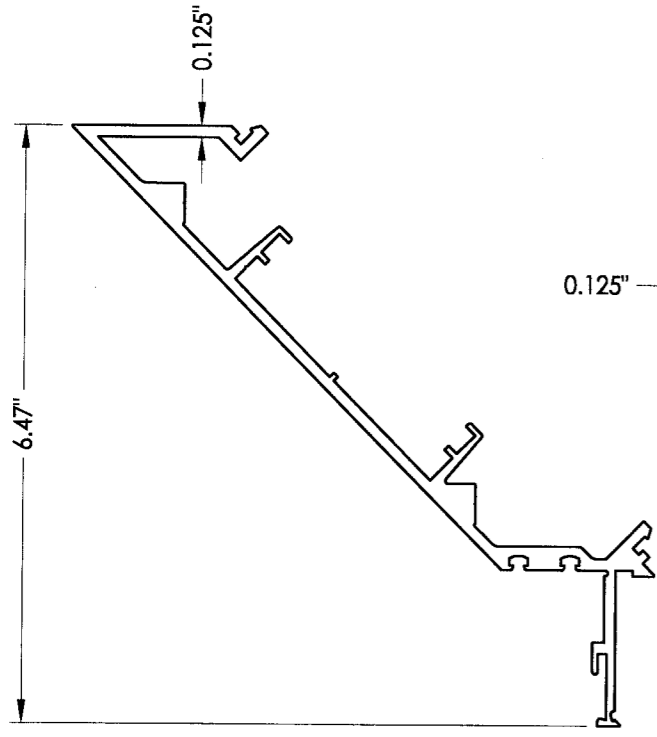
Documents Prepared By:  
**RW** BUILDING CONSULTANTS, INC.  
 P.O. Box 230 Valrico FL 33595  
 Phone No.: 813.659.9197  
 Florida Board of Professional Engineers  
 Certificate Of Authorization No. 9813  
*Alan King* 7-23-16  
 Ryan J. King, P.E. No. 64619

PRODUCT: WEST TAMPA GLASS  
 SERIES WTG-500  
 PART OR ASSEMBLY: COMPONENTS

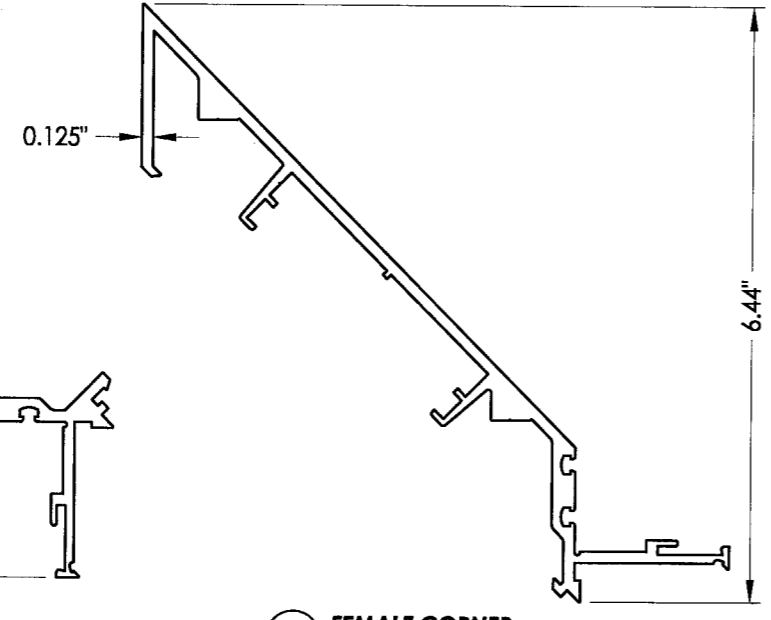
NO.	DATE	REVISED PER	DADE	COMMENTS	JK	BY
1	4/22/10					

DATE: 7/07/09  
 SCALE: N.T.S.  
 DWG. BY: DWS  
 CHK. BY: LFS  
 DRAWING NO.: S-4085  
 SHEET 11 OF 13

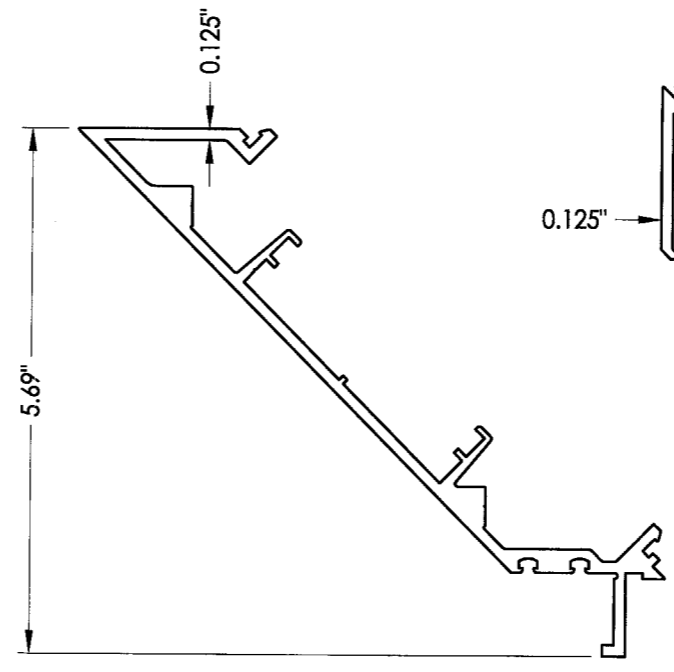
Approved as complying with the  
 Florida Building Code  
 Date: *OCT. 6 2010*  
 NOA#: *29-1202-04*  
 Miami Dade Product Control  
 By: *Manuel Perez*



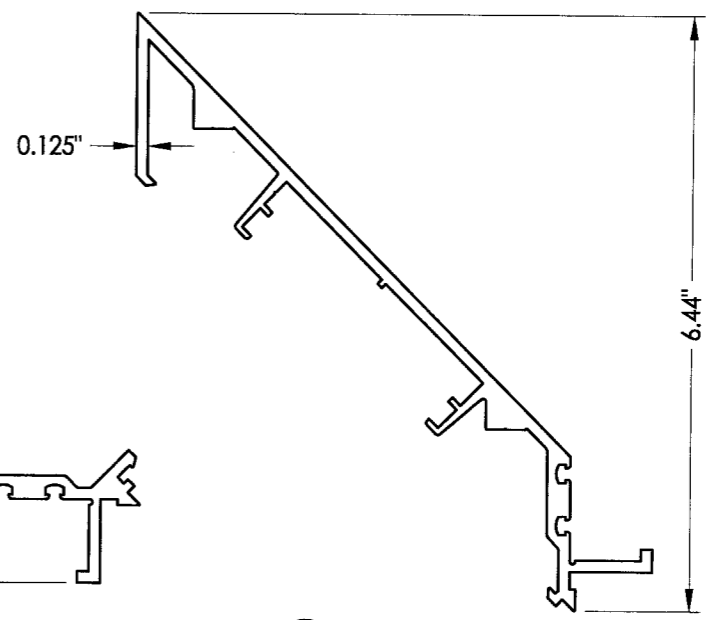
8 MALE CORNER



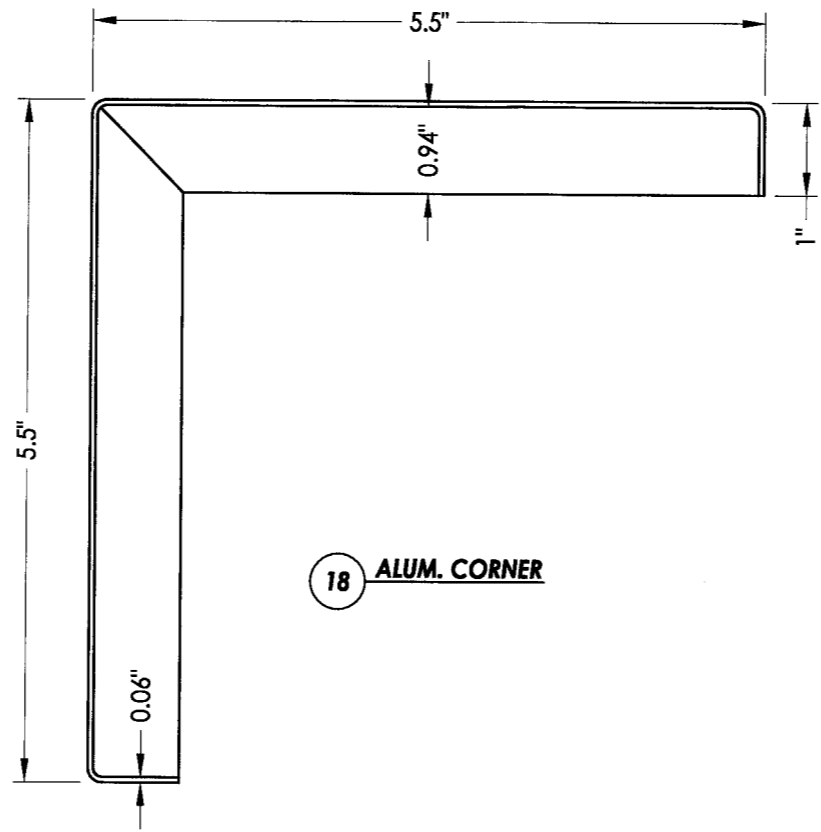
9 FEMALE CORNER



8A MALE CORNER



9A FEMALE CORNER



18 ALUM. CORNER

Approved as complying with the Florida Building Code  
 Date OCT 19 2010  
 NOAH 07-1207.04  
 Miami Desk Product Control  
 By Manuel Piza

DATE: 7/07/09		REVISIONS	
SCALE: N.T.S.		NO.	DATE
DWG. BY: DWS		1	4/22/10
CHK. BY: LFS		REVISED PER DADE COMMENTS	
DRAWING NO.: S-4085		JK	BY
SHEET 12 OF 13			
PRODUCT: WEST TAMPA GLASS SERIES WTG-500		COMPONENTS	
PART OR ASSEMBLY:			
Documents Prepared By: BUILDING CONSULTANTS, INC. P.O. Box 230 Valrico FL 33595 Phone No.: 813.659.9197 Florida Board of Professional Engineers Certificate Of Authorization No. 9813			
Ryan J. King, P.E. No. 64619			

R:\A - Projects\Project - Folders\proj\_1401-1500\PE 1478\D\_R\WBC Drawings\WTG-500\S-4085.dwg\_1-13

BILL OF MATERIALS		
ITEM	DESCRIPTION	MATERIAL
C	MAX. 1/4" SHIM SPACE	-
1	JAMB (#506)	6063-T5 ALUM.
2	HEAD & SILL (#501)	6063-T5 ALUM.
3	HEAD & SILL & INTERMEDIATE COVER (#507)	6063-T5 ALUM.
4	GLASS RETAINER (#709)	6063-T5 ALUM.
4A	GLASS RETAINER (#703)	6063-T5 ALUM.
4B	GLASS RETAINER (#703A)	6063-T5 ALUM.
4C	GLASS RETAINER (#709A)	6063-T5 ALUM.
5	GLAZING ADAPTOR (#702)	6063-T5 ALUM.
8	MALE CORNER (#714)	6061-T6 ALUM.
8A	MALE CORNER (#714A)	6061-T6 ALUM.
9	FEMALE CORNER (#715)	6061-T6 ALUM.
9A	FEMALE CORNER (#715A)	6061-T6 ALUM.
10	ALUMINUM ANGLE CLOSER (1-1/2" X 1-1/2")	6063-T5 ALUM.
11	ANCHOR (SEE ANCHOR SCHEDULE)	STEEL
12	FEMALE MULLION (#505)	6061-T6 ALUM.
12A	FEMALE MULLION (#505A)	6061-T6 ALUM.
13	MALE MULLION (#504)	6061-T6 ALUM.
13A	MALE MULLION (#504A)	6061-T6 ALUM.
15	HEAD & SILL POCKET FILLER (#711)	6063-T5 ALUM.
16	ASSEMBLY SCREW #8-18 X 1" PH SMS	STEEL
16A	ASSEMBLY SCREW #12-18 X 1-1/2" PH SMS	STEEL
17	ALUM. CLOSER .060 ALUM. BREAKMETAL	ALUMINUM
18	ALUM. CORNER .060 ALUM. BREAKMETAL	6063-T5 ALUM.
22	SPACER GASKET INTERIOR (GK004) TREMCO SCR-900 70 DUROMETER	EPDM
23	SPACER GASKET INTERIOR (GK003) TREMCO SCR-900 70 DUROMETER	EPDM
24	WEDGE GASKET EXTERIOR (GK005) TREMCO SCR-900 70 DUROMETER	EPDM
25	SEALANT DOW 995 OR DOW 983	SILICONE
26	SETTING BLOCK 5/8" X 3/8" X 4" FOR 1/4" OR 9/16" GLASS	EPDM / SILICONE
26A	SETTING BLOCK 1-1/4" X 3/8" X 4" FOR 1" OR 1-5/16" GLASS	EPDM / SILICONE
26B	CLOSER BLOCK 1-3/4" x 1" CLOSED CELL FOAM	FOAM
30	BACKER ROD CLOSED CELL EXTRUDED FOAM	FOAM
31	SEALANT DOW 983 OR DOW 795	SILICONE
31A	SEALANT DOW 795	SILICONE
33	GLAZING SPACER AT INSULATED GLASS	ALUM. OR S.S.
35	1/4" X 3" ST. HOT ROLLED FLAT BAR PRIMER FINISH (ASTM A588)	STEEL
36C	1/4" x 2-1/4" STEEL HOT ROLLED FLAT BAR PRIMER FINISH (ASTM A588)	STEEL
36D	1/2" x 2" STEEL HOT ROLLED FLAT BAR PRIMER FINISH (ASTM A588)	STEEL
37	PLASTIC CLIPS	PLASTIC
38A	FACE COVER	6063-T5 ALUM.
38B	FACE COVER	6063-T5 ALUM.
38C	FACE COVER	6063-T5 ALUM.

BILL OF MATERIALS		
ITEM	DESCRIPTION	
38D	FACE COVER	6063-T5 ALUM.
38E	FACE COVER	6063-T5 ALUM.
38F	FACE COVER	6063-T5 ALUM.
38G	FACE COVER	6063-T5 ALUM.
38H	FACE COVER	6063-T5 ALUM.
38I	FACE COVER	6063-T5 ALUM.
38J	FACE COVER	6063-T5 ALUM.

Documents Prepared By:  
**RW** BUILDING CONSULTANTS, INC.  
 P.O. Box 230 Valrico FL 33595  
 Phone No.: 813.659.9197  
 Florida Board of Professional Engineers  
 Certificate Of Authorization No. 9813  
 Ryan J. King, P.E. No. 64619

PRODUCT: WEST TAMPA GLASS  
 SERIES WTG-500  
 PART OR ASSEMBLY:  
 BILL OF MATERIALS

NO.	DATE	REVISED PER	DADE	COMMENTS	JK	BY
1	4/22/10					

DATE: 7/07/09  
 SCALE: N.T.S.  
 DWG. BY: DWS  
 CHK. BY: LFS  
 DRAWING NO.: S-4085  
 SHEET 13 OF 13

Approved as complying with the Florida Building Code  
 Date: 09-06-2010  
 NCMA# 09-1202-04  
 Release Date Product Control  
 By: *Walter Perez*